



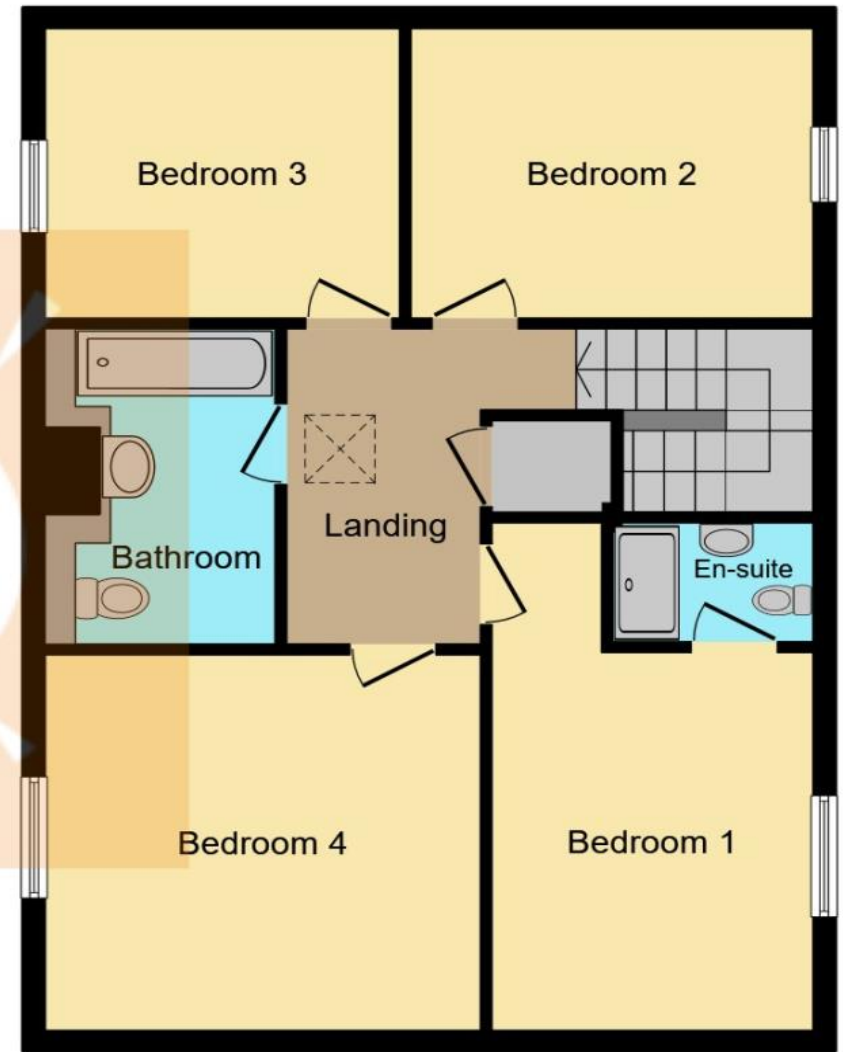
No. 10 Chapel Farm Steading, Chapel Road, Houston

Fixed Price £515,000





Ground Floor



First Floor

This plan is for illustration purposes only and may not be representative of the property. Plan not to scale.

THE PROPERTY

Chapel Farm Steading - No. 10 is the only DETACHED property within the development. A stunning home with 4 bedrooms and 2 public rooms over 151m². Part of a stunning rural development. A series of 10 beautifully designed three and four bedroom luxurious family homes. Located on the outskirts of Houston Village and within the Gryffe catchment. Please contact The Property Boom for lots more information.

Any areas, measurements or distances quoted are approximate and floor Plans are only for illustration purposes and are not to scale. Specification may vary. Please check with sales agent.

THESE PARTICULARS ARE ISSUED IN GOOD FAITH BUT DO NOT CONSTITUTE REPRESENTATIONS OF FACT OR FORM PART OF ANY OFFER OR CONTRACT.

GROUND FLOOR ROOM DIMENSIONS:

Lounge: 5.10m (16'9") x 3.80m (12'6")

Kitchen / Family Room: 7.20m (23'8") x 5.10m (16'9")

Utility Room : 2.20m (7'3") x 2.00m (6'7")

W.C.: 2.00m (6'7") x 1.40m (4'7")

FIRST FLOOR ROOM DIMENSIONS:

Bedroom One: 3.80m (12'6") x 3.60m (11'10")

Bedroom Two: 3.70m (12'2") x 3.20m (10'6")

Bedroom Three: 3.40m (11'2") x 3.20m (10'6")

Bedroom Four: 3.80m (12'6") x 3.50m (11'6")

Family Bathroom: 3.10m (10'2") x 2.40m (7'11")

En Suite Shower Room: 2.50m (8'3") x 1.30m (4'3")

www.thepropertyboom.com
70 West Regent Street, Glasgow, G2 2QZ
Tel: 0333 900 9089 / Email: smile@thepropertyboom.com