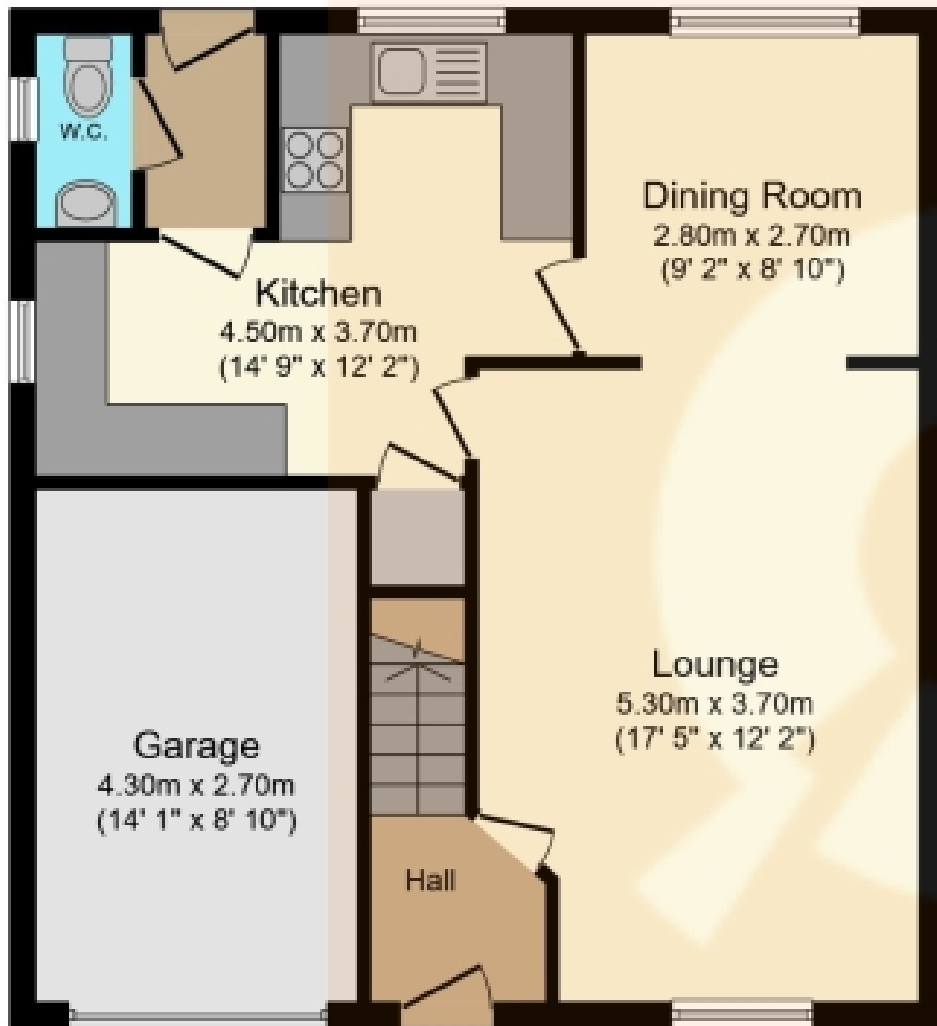




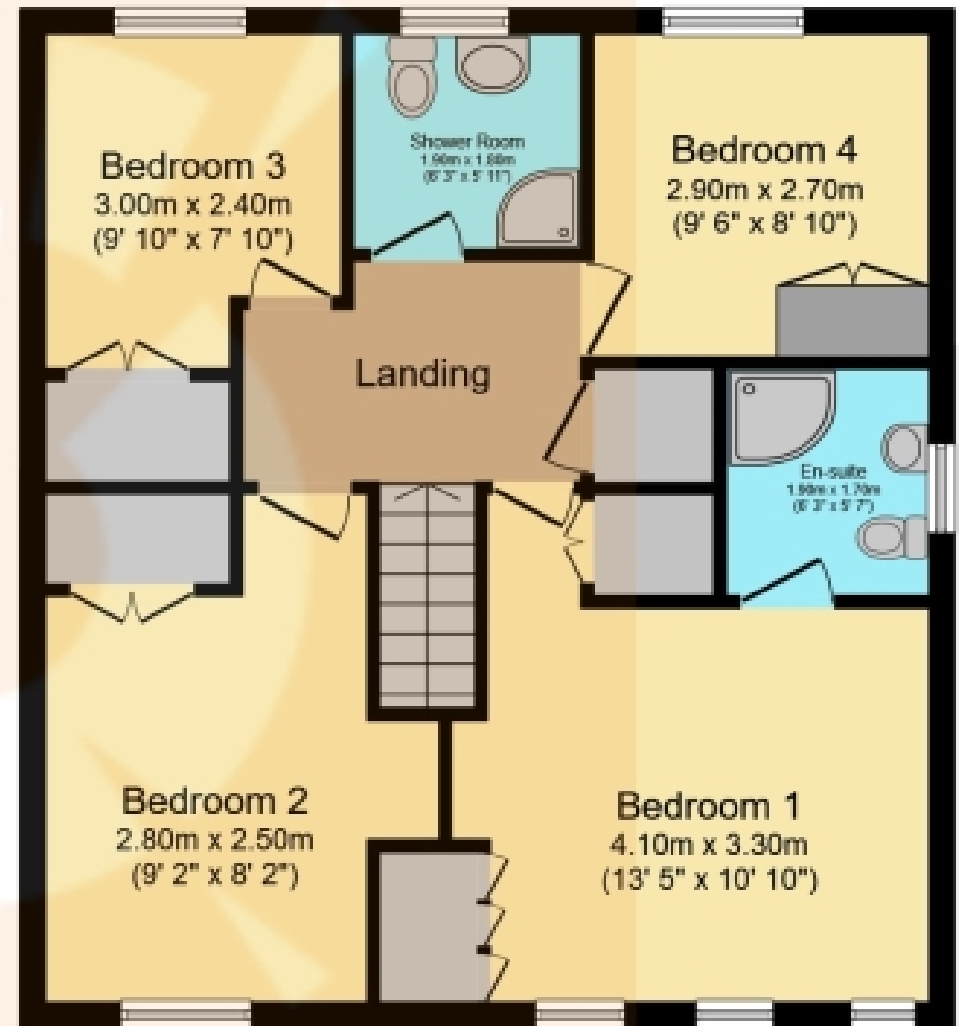
15 Woodlands Crescent, Johnstone

Offers Over £269,995





Ground Floor



First Floor

Total floor area 119.9 sq.m. (1,290 sq.ft.) approx

This plan is for illustration purposes only and may not be representative of the property. Plan not to scale. Powered by PropertyBox

THE PROPERTY

**** WALK-IN CONDITION ** CONTEMPORARY KITCHEN ** BUILT-IN WARDROBES WITHIN ALL BEDROOMS ** MAIN SHOWER ROOM, EN-SUITE SHOWER ROOM & DOWNSTAIRS W.C. ** MULTI-CAR DRIVEWAY LEADING TO INTEGRAL GARAGE ****. Please contact your personal estate agents, The Property Boom, for much more information and a copy of the Home Report.

Nestled in a sought-after Johnstone estate, No. 15 Woodlands Crescent effortlessly combines style, functionality, and contemporary living. This immaculate home, presented in walk-in condition, is ideal for a wide range of purchasers including growing families and professionals alike.

At the front, a multi-car monobloc driveway and integral garage provide safe off-street parking. Upon entering the bright reception hallway, a stylish family lounge welcomes you, tastefully decorated for relaxation and entertaining. The open-plan design seamlessly connects to a delightful dining room.

The contemporary kitchen features hi-gloss wall and base mounted units paired with contrasting countertops, creating a fashionable and efficient workspace. Quality integrated appliances include a 4-ring gas hob with electric oven/grill and extractor hood, and there is a freestanding washing machine, tumble dryer and fridge/freezer which will also be included within the sale. Completing the ground floor is the pristine W.C. which is perfectly elegant in its simplicity.

The upper level houses four generously proportioned bedrooms, each with built-in wardrobes, offering ample space and storage. Bedroom One includes a modern en-suite shower room. The property also features a bright three-piece shower room with a walk-in shower cubicle, W.C., and washbasin.

Step outside to the low-maintenance, fully enclosed rear garden with decorative stone chips and a large sociable decking area – perfect for outdoor gatherings and enjoying fresh air.

Living in Johnstone offers a charming and vibrant community experience. Located in the heart of Renfrewshire, this historic town combines the best of both worlds - the tranquility of a residential area and the convenience of nearby amenities. The town offers a range of local shops, restaurants, and leisure facilities, ensuring that residents have everything they need within easy reach. Nature lovers will appreciate the nearby parks and green spaces, providing ample opportunities for outdoor activities and relaxation. Furthermore, Johnstone benefits from excellent transport links, including a railway station, making it convenient for commuting to nearby towns and cities.

We have no doubt that this stunning home will be very popular and therefore would highly recommend an early viewing to avoid disappointment. Viewing by appointment - please contact The Property Boom to arrange a viewing or for any further information and a copy of the Home Report. Any areas, measurements or distances quoted are approximate and floor Plans are only for illustration purposes and are not to scale. Thank you.

WOULD YOU LIKE A FREE DETAILED VALUATION OF YOUR OWN PROPERTY ?

TAKE ADVANTAGE OF OUR DECADES OF EXPERIENCE AND GET YOUR FREE PROPERTY VALUATION FROM OUR FRIENDLY AND APPROACHABLE TEAM. WE CUT THROUGH THE JARGON AND GIVE YOU SOLID ADVICE ON HOW AND WHEN TO SELL YOUR PROPERTY.

THESE PARTICULARS ARE ISSUED IN GOOD FAITH BUT DO NOT CONSTITUTE REPRESENTATIONS OF FACT OR FORM PART OF ANY OFFER OR CONTRACT.

www.thepropertyboom.com
70 West Regent Street, Glasgow, G2 2QZ
Tel: 0333 900 9089 / Email: smile@thepropertyboom.com