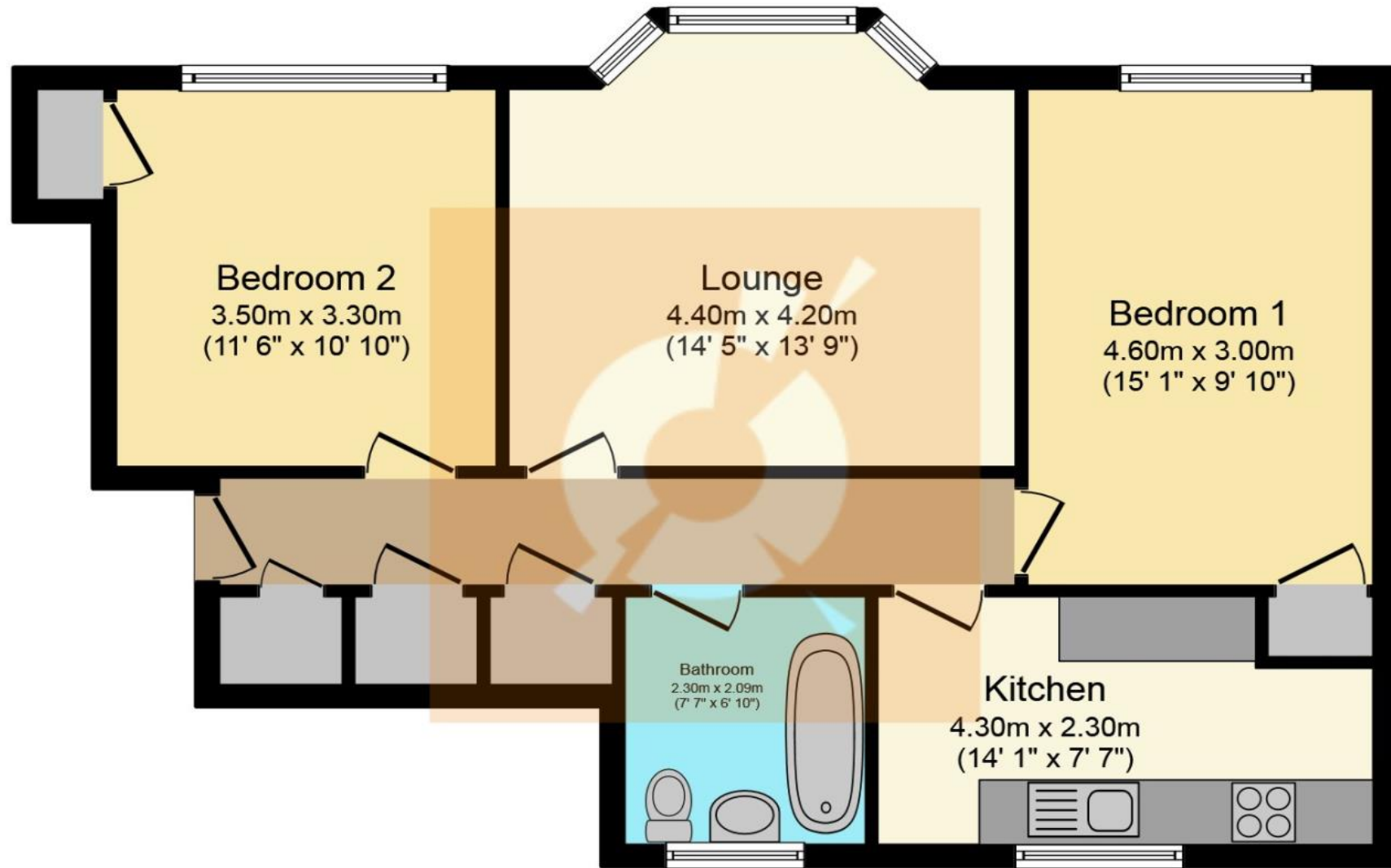




8f Ochil Road, Renfrew

Offers Over £75,000





Floor Plan

This plan is for illustration purposes only and may not be representative of the property. Plan not to scale.

THE PROPERTY

*****FULLY REFURBISHED TOP FLOOR APARTMENT*** Fantastic Room Dimensions*** Garden***Walk in and start living condition*** VIDEO TOUR AVAILABLE*** Please call your personal estate agents, The Property Boom for more details.**

Welcome to No. 8f Ochil Road and this fabulous two-bedroom top floor apartment. This property has been maintained to a high level and is in true walk in and start living condition.

A secure entry system provides access to an immaculate communal entrance close and stairwell.

Upon stepping into the welcoming reception hallway with fresh neutral décor, you will notice that it is a bright, airy, and superbly spacious apartment. Access in the first instance is to the generously proportioned lounge with tasteful quality flooring, impressive ceiling heights and bay windows which allow natural light to engulf the room.

The modern fitted kitchen offers ample storage within various beech-effect wall to floor mounted units with a striking worksurface which creates a fashionable and efficient workspace. The kitchen further benefits from a host of integrated appliances to include a 5-ring gas hob and double oven. There is a fridge freezer and washing machine which will also be included within the sale of this wonderful property, making this an excellent first-time purchase.

There are two double bedrooms which have been tastefully decorated throughout with warm, neutral tones and fitted carpets which create a cosy feel.

The pristine family bathroom is fully tiled and comprises of a three-piece bathroom suite to include a shower-over-bath, wash-hand-basin and w.c. and contemporary chrome fixtures and fittings can be found throughout.

Externally, there is a private garden with a section laid to lawn, making for easy maintenance as well as a communal drying green. A substantial timber shed offers excellent storage solutions for indoor/outdoor equipment.

This fantastic apartment further benefits from gas-central heating and double-glazing throughout. Storage is superb throughout with various built-in cupboards and additional loft space.

Renfrew has an eclectic range of shops to include the popular Intu Braehead and Soar which are just a 10-minute drive away. Glasgow International Airport and the Queen Elizabeth University Hospital are a short drive away and the nearby M8 motorway provides quick and easy access to Glasgow City Centre and further afield. For more detailed information on schooling, please use The Property Boom's catchment and performance tool on our website.

We would highly recommend an early viewing of this fantastic accommodation as we have no doubt it will be very popular. Viewing is by appointment - please contact your personal estate agents, The Property Boom to arrange a viewing or for any further information and a copy of the Home Report. Any areas, measurements or distances quoted are approximate and floor Plans are only for illustration purposes and are not to scale.

THESE PARTICULARS ARE ISSUED IN GOOD FAITH BUT DO NOT CONSTITUTE REPRESENTATIONS OF FACT OR FORM PART OF ANY OFFER OR CONTRACT.

www.thepropertyboom.com
70 West Regent Street, Glasgow, G2 2QZ
Tel: 0333 900 9089 / Email: smile@thepropertyboom.com